



PRODUCTS MANUAL



CHANGZHOU HANWAY IMP.&EXP. CO.,LTD,

CHANGZHOU ALLREADY MACHINERY & PARTS CO.,LTD



A1 缸套组合 (白亮3环)
Cylinder liner kit(white 3R)



A2 缸套组合 (白亮4环)
Cylinder liner kit(white 4R)



A3 缸套组合 (等离子3环)
Cylinder liner kit(plasma 3R)



A4 缸套组合 (等离子4环)
Cylinder liner kit(plasma 4R)



A5 缸套组合
Strongmax 3R



A6 缸套 (等离子)
Cylinder liner(plasma)



A7 缸套 (白亮)
Cylinder liner(white)



A8 封水圈
water seal ring



A9 缸套 (封水圈)
Line kit with water seal ring



A10 活塞 (4R)
Piston(4R)



A11 活塞 (3R)
Piston(3R)



A12 活塞环 (3R)
Piston ring(3R)



A13 活塞环 (4R)
Piston ring(4R)



A14 活塞销
Piston pin



A15 活塞销挡圈
Piston pin circlip



A16 机油泵总成 (钢板)
Oil pump(steel)



A17 机油泵总成 (一体)
Oil pump assy.(comp.)



A18 机油泵垫片
Oil pump gasket



A19 连杆
Connecting rod



A20 连杆衬套 (合金)
Connecting rod bushing(metal)



A21 连杆衬套 (铜)
Connecting rod bushing(copper)



A22 连杆瓦
Connecting rod shell



A23 喷油泵
Fuel injection pump



A24 喷油泵螺栓
Oil pump bolt



A25 柱塞偶件
Plunger(Element)



A26 出油阀偶件
Delivery valve



A27 喷油器总成
Fuel injector assy



A28 油嘴偶件
Nozzle



A29 曲轴
Crankshaft



A30 曲轴油塞
Crankshaft oil plug



A31 曲轴五小件
Crankshaft 5 kit



A32 曲轴平键
Crankshaft flat key



A33 飞轮锁片
Flywheel lock washer



A34 飞轮
Flywheel



A35 飞轮螺母
Flywheel nut



A36 飞轮平键
Flywheel key



A37 全套垫片 (豪华款)
Gasket set with rubber



A38 全套垫片 (简装)
Gasket set



A39 全套齿轮 (白亮)
Gear kit(white)



A40 全套齿轮 (发黑)
Gear kit(black)



A41 曲轴正时齿轮
Crankshaft timing gear



A42 凸轮轴齿轮
Camshaft gear



A43 调速轴齿轮
Governor shaft gear



A44 平衡轴齿轮
Balance shaft gear



A45 启动齿轮
Starting shaft gear



A46 曲轴油封
Crankshaft oil seal



A47 启动轴油封
Starting shaft oil seal



A48 曲轴衬套
Crankshaft bushing



A49 主轴瓦
Main bearing shell



A50 下平衡轴
Lower balance shaft



A51 上平衡轴
Upper balance shaft



A52 平衡轴轴盖垫片
Balance shaft cover gasket



A53 平衡轴盖
Balance shaft cover



A54 凸轮轴
Camshaft



A55 凸轮轴盖
Camshaft cover



A56 凸轮轴盖垫片
Camshaft cover gasket



A57 起动轴
Starting shaft



A58 气门组合
Valve kit



A59 进排气门
IN/EX.Valve



A60 进排气门座圈
IN/EX.Valve seat



A61 气门内外弹簧1
IN/EX.Valve spring1



A62 气门内外弹簧2
IN/EX.Valve spring2



A63 气门弹簧座
Valve spring seat



A64 气门锁夹1
Valve collect1



A65 气门锁夹2
Valve collect2



A66 气门挺柱
Valve tappet



A67 气门导管
Valve guide



A68 气门推杆
Valve push rod



A69 汽缸盖总成
Cylinder head assy



A70 汽缸盖
Cylinder head



A71 汽缸盖垫片
Cylinder head gasket



A72 缸盖螺栓
Cylinder head stud



A73 缸盖螺母
Cylinder head nut



A74 缸罩 (铁)
Cylinder cover(iron)



A75 缸罩 (铝)
Cylinder head cover(AL)



A76 缸罩总成
Cylinder cover assy



A77 缸罩垫片
Cylinder head cover gasket



A78 机油指示器总成
Oil indicator assy



A79 减压总成
Decompressure assy



A80 减压档杆
Pressure reducing lever



A81 加油滤网
Oil dipstick



A82 油箱
Fuel tank



A83 指示器接头垫
Oil indicator packing



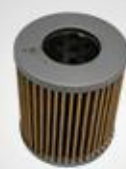
A84 油箱盖
Fuel tank cover



A85 机滤总成
Oil filter assy



A86 机滤网
Oil filter screen



A87 柴滤芯
Filter element



A88 柴滤
Filter assembly



A89 柴油管
Fuel pipe(S Pipe)



A90 输油管
Delivery fuel pipe



A91 机油管
Lubricating oil pipe



A92 高压油管
High pressure pipe



A93 回油管
Oil return pipe



A94 主轴承盖
Main bearing cover



A95 主轴承盖垫片
Main bearing cover packing



A96 摇臂总成
Rocker arm seat



A97 摇臂螺栓+螺母
Rocker arm bolt&nut



A98 摇臂卡簧
Rocker arm clip



A99 摇臂座
Rocker arm seat



A100 摇臂含衬套
Rocker arm with bush



A101 摇臂短螺栓
Rocker arm bolt—short



A102 摇臂长螺栓
Rocker arm bolt—long



A103 摇臂长短螺栓
Rocker arm bolt(long&short)



A104 摇手
Starting handle



A105 摇臂轴
Rocker arm shaft



A106 油标尺
Oil rule



A107 机油尺
Oil dipstick



A108 机油尺+盖
Oil dipstick&cover



A109 油底壳
Oil sump



A110 油底壳垫片
Oil sump gasket



A111 齿轮室盖(直角)
Gear case cover(vertical angle)



A112 齿轮室盖
Gear case cover



A113 油泵扳手座垫片
Fuel priming handle seat packing



A114 转速指示牌
Speed indicating panel



A115 齿轮室盖垫片
Gear case cover gasket



A116 呼吸器
Breather



A117 限油器
Fuel limiter



A118 泵油扳手座
Fuel priming handle bushing



A119 机体
Cylinder block



A120 上盖
Upper cover



A121 上盖垫片
Upper cover gasket



A122 空滤 (铁)
Air filter(iron)



A123 空滤 (塑料)
Air filter(plastic)



A124 消声器
Silencer



A125 吊环螺栓
Lifting eye bolt



A126 吊环
Lifting eye



A127 进气管
Intake pipe



A128 进气管垫片
Intake pipe packing



A129 排气管
Exhaust pipe



A130 排气管垫片
Exhaust pipe packing



A131 调速杠杆总成
Governor lever assy



A132 调速支架
Governor ball spacer



A133 调速连接杆 (铝)
Governor con.rod(AL)



A134 调速拉簧
Governor spring



A135 调速滑盘垫片
Governor ball race gasket



A136 调速滑盘
Governor ball race



A137 调速手柄
Speed-control lever knob



A138 调速连接杆 (铁)
Governor con.rod(iron)



A139 调速齿轮衬套 (铜)
Governor bush(copper)



A140 调速衬套 (合金)
Governor gear bushing(metal)



A141 起动轴衬套 (甲, 大)
Starting shaft bushing(big)



A142 起动轴衬套 (乙, 小)
Starting shaft bushing(small)



A143 凸轮轴衬套 (前, 小)
Camshaft front bushing(small)



A144 凸轮轴衬套 (后, 小)
Camshaft rear bushing(small)



A145 调速轴
Governor shaft



A146 钢球
Steel ball



A147 皮带盘10寸
Belt pulley 10"



A148 钢板机脚
Steel stand



A149 皮带盘10"
Pulley 10"



A150 后盖(平板)
Rear cover(panel)



A151 后盖(铸铁)
Rear cover(cast iron)



A152 后盖
Rear cover



A153 后盖垫片
Rear cover packing



A154 管接螺栓
Pipe connecting bolt



A155 连接管固定螺钉
Connecting pipe bolt



A156 螺栓
Bolt



A157 连接杆调节螺钉
Connecting rod bolt



A158 水箱
Water hopper



A159 浮子总成
Float assy



A160 水箱垫片
Hopper packing



A161 水箱漏斗
Hopper funnel



A162 水箱漏斗垫片
Hopper funnel gasket



A163 水堵
Water plug



A164 轴承
Bearing



A165 轴承306
Bearing 306



A166 轴承NJ312E
Bearing NJ312E



A167 轴承挡圈
Bearing circlip



A168 KSK-1黑色小水泵
KSK-1 black small pump



A169 网片
Windows net



A170 风扇电机
Fan generator



A171 飞轮发电机150W
Flywheel generator 150W



A172 飞轮发电机90W
Flywheel generator 90W



A173 小水泵 3孔 ZS1110
WATER PUMP(3 HOLE) ZS1110



A174 小水泵 4孔 ZS1110
WATER PUMP(4 HOLE) ZS1110



A175 小水泵泵头
Water pump head



A176 冷凝风扇
Cooling fan



A177 冷凝水箱
Condenser fuel tank



A178 散热器
Radiator



A179 三级空滤
III Air filter



A180 冷凝大罩
Condenser cover



A181 油箱支架
Fuel tank frame



A182 大皮带轮
Big belt pulley



A183 上套管
Upper thimble



A184 下套管
Lower thimble



A185 下水箱
Lower water hopper



A186 张紧轮总成
Tension pulley



A187 张紧轮总成
Tension pulley



A188 水箱盖板
Water tank cover



A189 起动马达QD1202A
Starting alternator QD1202A



A190 电起动开关总成
Electric start switch



A191 三角皮带
V-belt



B1 186FA 风冷柴油机
186FA Air cooled diesel engine



B2 活塞
Piston



B3 连杆
Connecting rod



B4 喷油泵
Fuel injection pump



B5 喷油器
Fuel injector



B6 连杆瓦
Connecting rod shell



B7 高压油管
High pressure oil pipe



B8 手拉盘
Hand-disk



B9 平传齿
Parallel gear



B10 凸轮轴齿轮
Camshaft gear



B11 平齿
Flat gear



B12 曲轴齿轮
Crankshaft gear



B13 汽缸盖
Cylinder head



B14 进气门
Intake valve



B15 排气门
Exhaust valve



B16 气门弹簧
Valve spring



B17 气门弹簧垫
Valve spring gasket



B18 气门锁夹
Valve collect



B19 气门油封
Valve oil seal



B20 进气管
Intake pipe



B21 主轴瓦
Main bearing shell



B22 气门挺柱
Valve tappet



B23 导风罩
Wind scooper



B24 消声器总成
Silencer assy



B25 活塞总成6.5HP
Piston assy.6.5HP



B26 干式空滤
Dry air filter



B27 干式空滤芯
Dry air filter element



B28 侧盖
Side cover



B29 机油滤网
Lubricating oil screen



B30 6203轴承
Bearing 6203



B31 6308轴承
Bearing 6308



B32 6207轴承
Bearing 6207



B33 凸轮轴
Camshaft



B34 平衡轴
Balance shaft



B35 机油泵
Lubricating oil pump



B36 调速推盘
Governor push plate



B37 传动齿轮
Driving gear



B38 上支架
Upper bracket



B39 下支架
Lower bracket



B40 汽缸盖罩垫
Cylinder cover gasket



B41 喷油器压板垫片
Fuel injector cover packing



B42 油滤式空滤垫
Air filter packing



B43 侧盖垫
Side cover gasket



B44 密封垫盖板 密封垫垫片
Gasket cover Gasket



B45 气门推杆
Valve push rod



B46 油封
Oil seal



B47 拨叉油封
Shifting fork oil seal



B48 拨叉
Shifting fork



B49 O型圈
O ring



B50 圆柱销
Cylindrical pin



B51 机油导管
Lubricating oil guide



B52 进气管纸垫
Intake pipe paper washer



B53 喷油器铜垫
Fuel injector copper packing



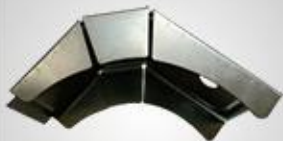
B54 滚针轴承
Needle roller bearing



B55 电气动盖板
Electropneumatic cover plate



B56 机油泵盖板
Lubricating oil pump cover



B57 引风板
Wind-guide



B58 喷油器压板
Fuel injector pressure plate



B59 减震块
Damping block



B60 机油尺
Oil dipstick



B61 意大利手柄
Italy handle



B62 二档手柄
Second gear lever



B63 飞轮
Flywheel



B64 飞轮垫片
Flywheel gasket



B65 螺丝双头
Stud



B66 螺栓
Bolt



B67 导风罩减震套
Air guide hood damping sleeve



B68 M13卡箍
M13 Clamp



B69 回位弹簧2
Return spring 2



B70 回位弹簧1
Return spring 1



B71 引风板减震器
Draught plate shock absorber



B72 减震条
Article damping



C1 电镐65A
Jack hammer 65A



C2 电镐100A
Jack hammer 100A



C3 FUJITA电镐1700W
Jack hammer 1700W



C4 活塞65A
Piston65A



C5 活塞环65A
Piston ring 65A



C6 活塞100A
Piston 100A



C7 活塞销 65A
Piston pin 65A



C8 把手 (塑料) 普通65A
Plastic handle 65AA(normal)



C9 把手 (塑料) 精品65A
Plastic handle 65A(best)



C10 把手100A
Handle 100A



C11 镐尖 65A
Pick tip 65A



C12 镐扁 65A
Pick flat



C13 前筒大孔 (优质) 65A
Front barrel



C14 定子65A
Stator 65A



C15 转子65A
Rotor 65A



C16 铁头65A
Iron head 65A



C17 侧把手
Side handle 65A



C18 碳刷65A/100A
Carbon brush 65A/100A



C19 开关65A/100A
Switch 65A/100A



C20 止动杆全套65A/100A
Lock bar 6 kits 65A/100A



C21 中间轴齿轮65A
Intermediate shaft gear



C22 最终齿轮65A
Final gear 65A



C23 中间轴齿轮100A
Intermediate shaft gear 100A



C24 最终齿轮100A
Final gear 100A



Model	Li(mm)	Model	Li(mm)	Model	Li(mm)	Model	Li(mm)
A30	762	B45	1143	B73	1854	B106	2692
A31	787	B45 1/2	1156	B74	1880	B108	2743
A32	813	B46	1168	B78	1981	B109	2769
A33	838	B48	1219	B79	2007	B110	2794
A34	864	B49	1245	B81	2057	B111	2819
A35	889	B50	1270	B82	2083	B114	2896
A36	914	B52	1321	B83	2108	B116	2946
A37	940	B53	1346	B85	2159	B117	2972
A38	965	B53 1/2	1359	B86	2184	B118	2997
A39	991	B55	1397	B88	2235	B119	3023
A40	1016	B56	1422	B89	2261	B120	3048
A41	1041	B57	1448	B90	2286	B125	3175
A42	1067	B58	1473	B91	2311	B126	3200
A43	1092	B59	1499	B92	2337	B128	3251
A44	1118	B60	1524	B93	2362	B132	3353
A45	1143	B62	1575	B94	2388	B135	3454
A46	1168	B63	1600	B94 1/2	2400	B140	3556
A47	1194	B64	1626	B95	2413	B142	3607
A48	1219	B65	1651	B96	2438	B146	3708
A50	1270	B66	1676	B96 1/2	2451	B150	3810
A51	1295	B67	1702	B98	2489	B151	3835
A52	1321	B68	1727	B99	2515	B152	3861
A53	1346	B69 1/2	1765	B101	2565	B155	3937
A55	1397	B70	1778	B103	2616	B158	4013
A56	1422	B71	1803	B104	2642	B160	4046



MODEL

6000	6001	6002	6003	6004	6005	6006
6007	6008	6009	6010	6011	6012	6013
6014	6015	6016	6017	6018	6019	6020
6021	6022	6024	6026	6200	6201	6202
6203	6204	6205	6206	6207	6208	6209
6210	6211	6212	6213	6214	6215	6216
6217	6218	6219	6220	6221	6222	6300
6301	6302	6303	6304	6305	6306	6307
6308	6309	6310	6311	6312	6313	6314
6315	6316	6317	6318	6319	6320	



MODEL

UCP202-10	UCP204	UCP204-12	UCP205	UCP205-14	UCP205-15	UCP205-16
UCP206	UCP206-18	UCP206-19	UCP206-20	UCP207	UCP207-20	UCP207-21
UCP207-22	UCP207-23	UCP208	UCP208-24	UCP208-25	UCP209	UCP209-26
UCP209-28	UCP210	UCP210-30	UCP210-31	UCP210-32	UCP211	UCP211-32
UCP211-34	UCP211-35	UCP212	UCP212-36	UCP212-38	UCP212-39	UCP213
UCP213-40	UCP214	UCP215	UCP216	UCP217	UCP218	

